



**310Fi**  
domestic hot water  
& hydronic heating  
**1.31Fi**

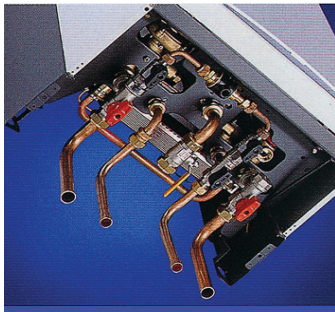
The Luna is a modulating boiler that delivers from 35,000 to 105,000 Btus. You can design large in-floor heating systems based upon a single Luna unit in your primary loop.

**IN-FLOOR HEAT**

A single Luna can service in-floor heating of 1800 lineal feet of 1/2" PEX pipe without any additional components. Multiple loops of 1800 feet can be achieved with manifolds for your PEX sub-zones.

**RADIATOR HEAT**

A single, self-contained Luna unit can service a large collection of radiators in a residential application without any modification. Simplicity of design and installation saves you money and will generate repeat sales through an expanding network of satisfied customers.



**FORCED AIR**

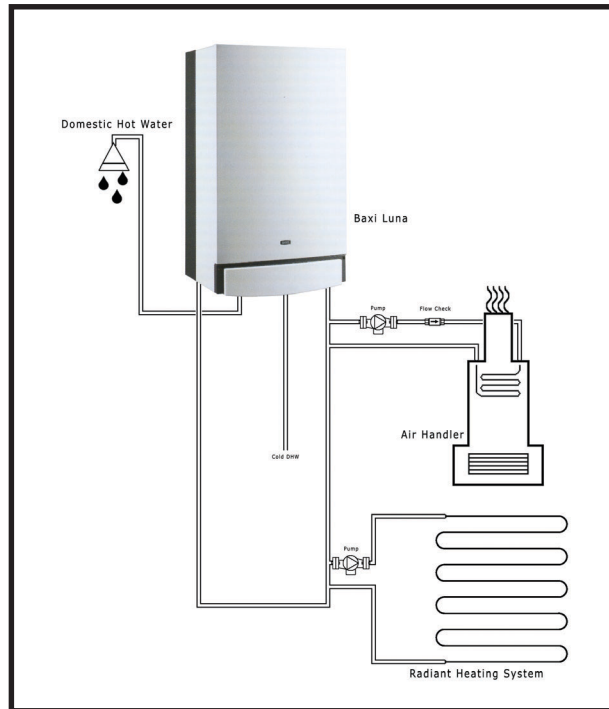
Luna self-contained systems can service large air handlers with no modifications. A simple connection to boiler supply water in, to supply water out, and to the air handler unit is all you need. Simplicity equals efficiency and efficiency equals success.

**EASY INSTALLATION**

Easy to follow installation template  
Easy to understand and access connections  
Adjustable supporting brackets  
Low mains water press requirement of 2.9 psi



**Totally Packaged  
Tankless Water  
Heater  
and  
Hydronic Heating  
Appliance**



Hydronic Specialties Co.  
4723 Tidewater Avenue  
Oakland, CA 94601

(800) 786-6847 • (510) 434-3141 fax • 2hsc.com



**BAXI LUNA**

**310Fi**  
domestic hot water  
& hydronic heating

**1.31Fi**  
hydronic heating only

HIGH EFFICIENCY  
GAS-FIRED  
TANKLESS  
WALL-HUNG  
HEATER

**THE AMAZING MODULATING  
BAXI LUNA  
HEATER**

Net in: 126,000 Btu

Net out: 35,000 - 105,000 Btu

**Superb Euro Technology**

**1 Million Sold Per Year**

**FULLY  
MODULATING  
HIGH  
EFFICIENCY  
ON-DEMAND  
HOT WATER**

**10-YEAR  
WARRANTY ON  
HEAT EXCHANGER**

**PRIORITIZED  
DOMESTIC  
HOT WATER**

**NO MECHANICAL  
ROOM REQUIRED**



**ASME  
"H" STAMP  
APPROVED**



**CSA CERTIFIED  
FOR SAFETY**

# 310Fi

## domestic hot water & hydronic heating

# 1.31Fi

## hydronic heating only

## FEATURES

- Electronic flame modulation
- Electronic ignition
- COMFORT position
- Temperature control by NTC probes
- Hydraulic 3-way brass diverter valve
- Stainless steel domestic hot water heat exchanger
- Stainless steel burner with 15 elements
- 3-spd circulation pump with built-in gas separator
- Gas valve with continual modulation hot water
- Gas pressure governor
- Automatic by-pass
- Automatic fan
- Connection plate
- Radio interference filter
- Pump overrun
- Anti-frost device on heating circuit
- Remote programmer option
- Outdoor probe option with remote programmer

## SAFETY DEVICES

- Electronic max. temp control - NTC probes
- Self-check automatic control system
- Overheat limit thermostat for main heat exchanger
- Gas control electronic panel
- Differential pressure switch for safe discharge of flue products
- Differential pressure switch to prevent operating if low water Pump exercise every 24 hours
- Strainer on the domestic hot water inlet
- Strainer on the heating system return

# BAXI LUNA

**SLEEK STYLING**

**EASY TO  
INSTALL &  
OPERATE**

Height = 30"  
Width = 18"  
Depth = 14"

Weight = 90 lbs



**FRONT  
CONTROL PANEL**

- Heating temperature control
- Domestic hot water temperature control
- Summer / Winter selector
- Blocked fan / chimney
- Overheating main heat exchanger
- Boiler working indicator
- Domestic hot water mode indicator
- Central heating mode indicator
- Reset
- Lack of gas / Faulty ignition / Reset

**WALL-HUNG GAS-FIRED  
WITH SEALED  
COMBUSTION CHAMBER  
FOR HYDRONIC HEATING AND  
INSTANTANEOUS DOMESTIC  
HOT WATER PRODUCTION**

**180  
gph  
with  
77°  
rise**

**24  
hrs  
a  
day**

